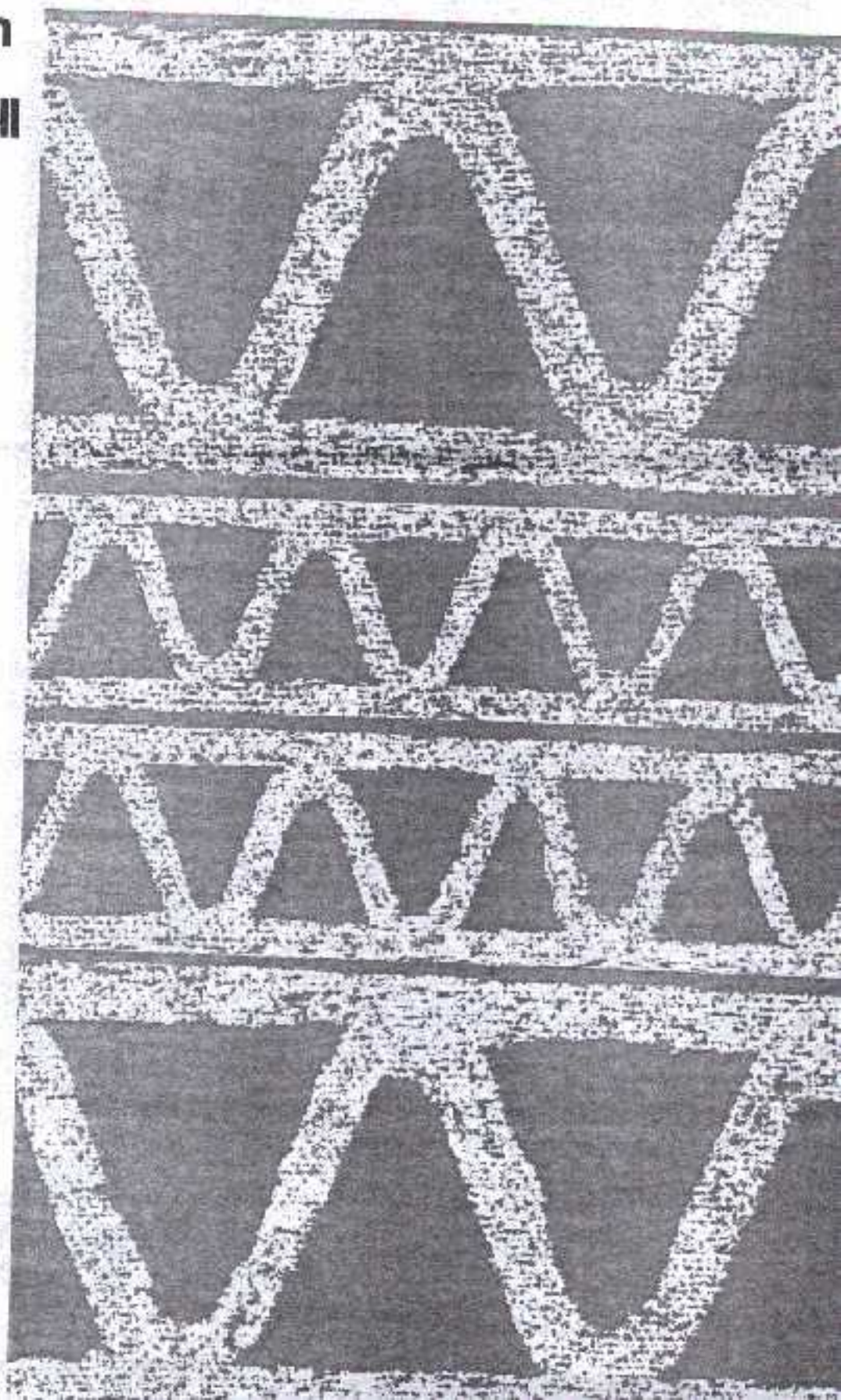


Masson Scott Thrissell 16 and 40 Lightweight Corrugators



The range of Machinery manufactured includes:-

Container Machinery

High Speed Heavy Duty and Compact Corrugators, Mill Roll Stands, Flexographic Folder-Gluers, Flexographic and Letterpress Printer-Slotters.

Postal Mechanisation Equipment

Letter Sorters, manual and automatic, Coding Desks, Stackers and Stack Replenishers, Letter Facers.

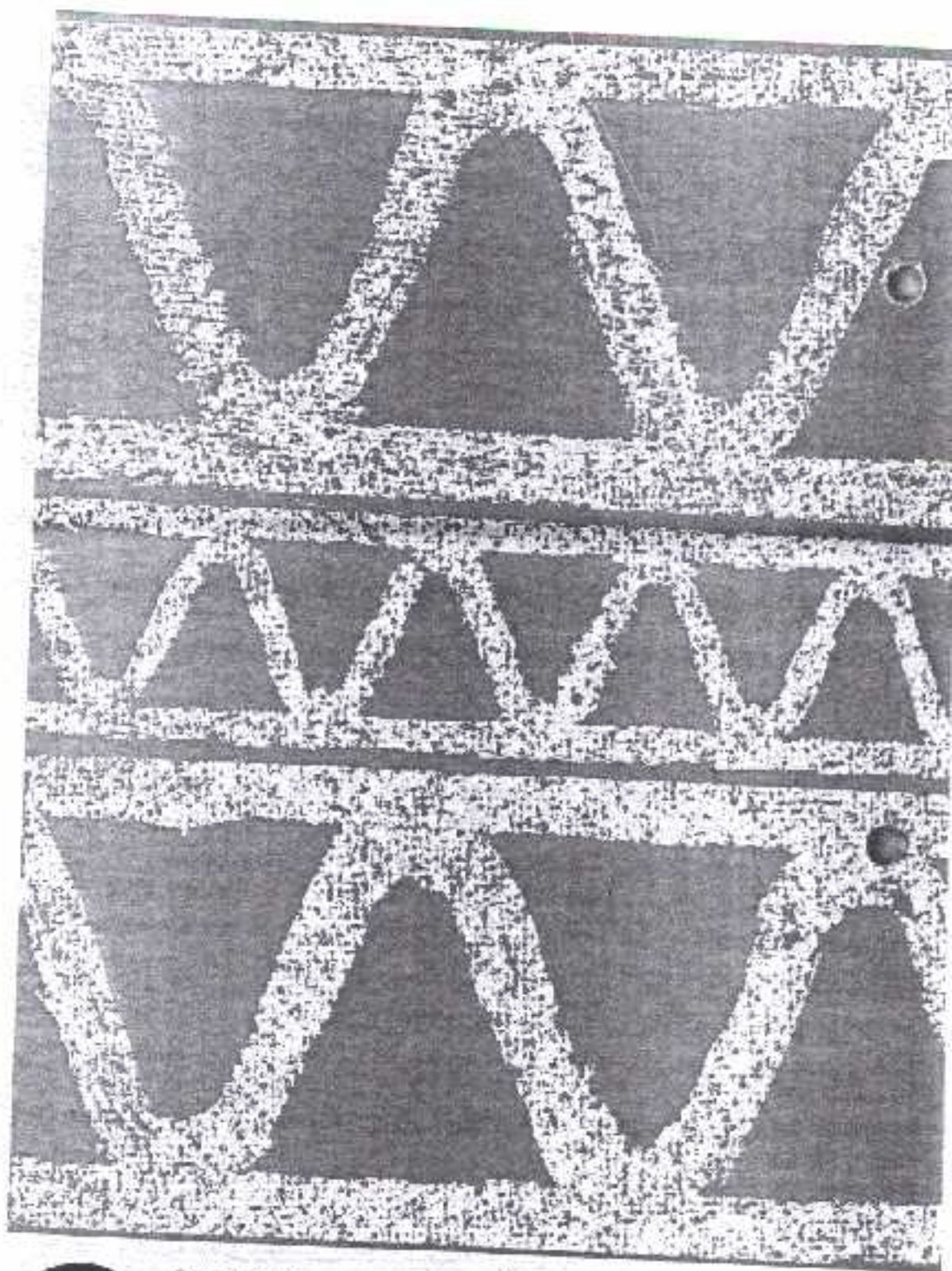
Paper Mill Machinery

Cutters, Winders, Unwind Stands.

Printing and Carton Machinery

Rotogravure Printing Presses for cartons and packaging materials, Turnover Unwind Stands, Butt Splicers, Lap Splicers, Carton Folders and Gluers.

The information contained in this brochure is intended to convey a fair and reasonable idea of the machine and is not to be taken as a precise specification to form part of a Contract of Sale.



**MASSON
SCOTT
THRIPPELL
ENGINEERING
LIMITED**

A member of the **MOLING** group

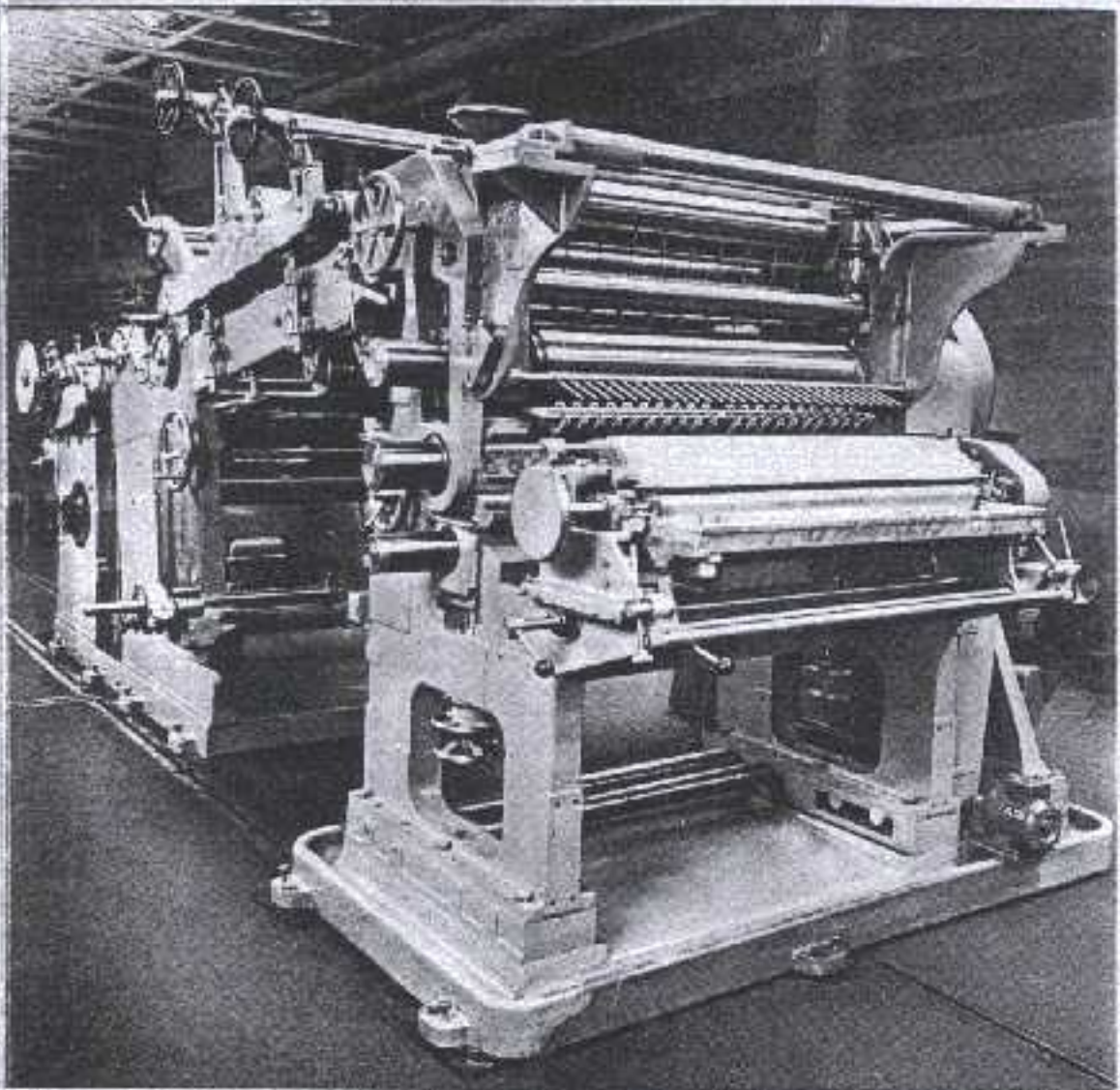
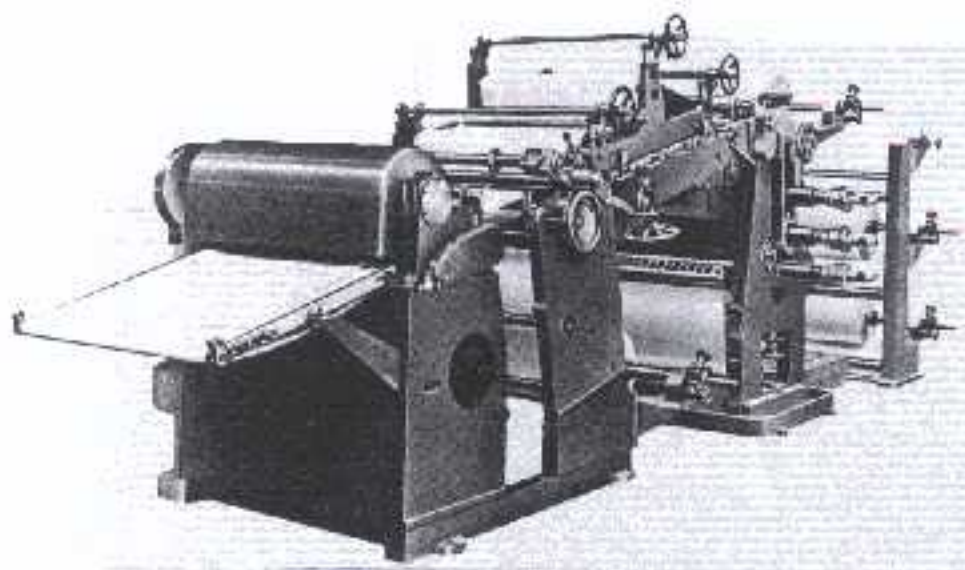
**Masson Scott Thrippell
Engineering Limited**

Easton Road
Bristol BS5 0HE
Telephone: Bristol 558201
Telex: 44242

Telegrams: Massioun Bristol

Technical Data

Production Speed	32.5 m (100 ft)	32.5 m (100 ft)
Max. Web Width	0.4 m (16 ins)	1.0 m (40 ins)
Cut-Off Sheet Length Range		102-1524 mm (4- 60 ins) 457-2286 mm (18-90 ins)
Max. Unwind Reel Diameter	910 mm (36 ins)	910 mm (36 ins)
Max. Rewind Reel Diameter	800 mm (31.5 ins)	800 mm (31.5 ins)
Space requirement – Length	3.5 m (11 ft 6 ins)	6.1 m (20 ft)
Width	2.1 m (7 ft)	4.0 m (13 ft)
Height (without reels)	1.7 m (5 ft 8 ins)	2.64 m (7 ft 8 ins)
Weight (without reels)	2288 Kgs (2.5 tons)	15,782 Kgs (15.5 tons) this includes Cut-Off, Creasing and Slitting Unit and Rewind.



size these units are eminently suitable for installation into existing packing operations where they can be sited adjacent to production lines, small part assemblies or even biscuit ovens. Established packaging producers can also use them to obtain production flexibility, thus enabling fluctuating market demands to be met.

Both the "16" and the "40" can be

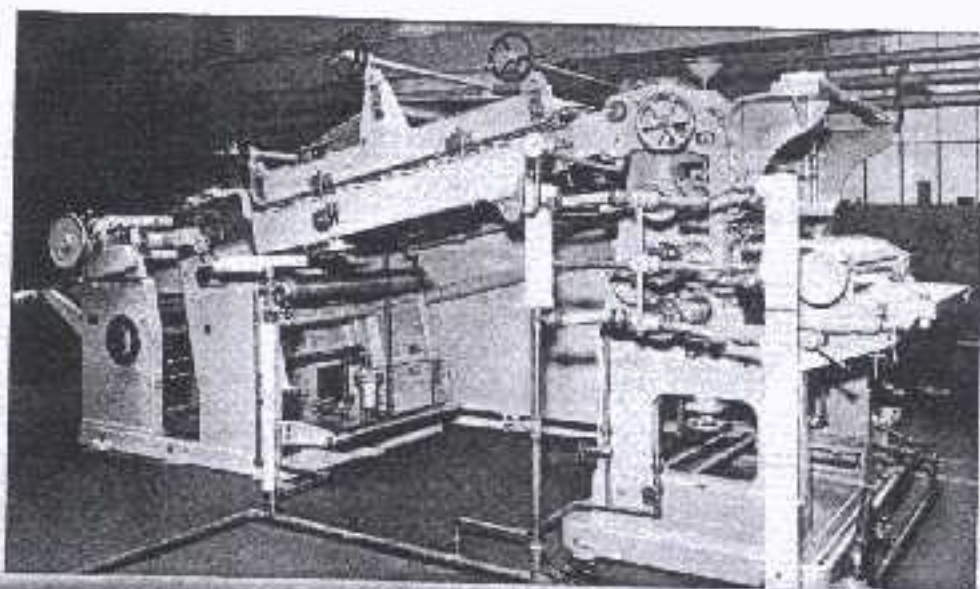
supplied with unwind stands which incorporate facilities for reel tension control and alignment and are capable of accommodating 2, 4 or 6 reels to meet customer requirements. A 2-reel Rewind Unit can also be supplied which will rewind a single web, or multiple webs after trimming and slitting.

A Rotary Cut-Off and Sheet

Delivery Conveyor are available. The Cut-Off is designed to handle both plain and pre-printed materials. In the case of the latter accurate cut-to-print register is manually controlled.

Easy to run and simple to maintain, Masson Scott Throssell Lightweight Corrugators produce top quality corrugated packaging to suit a wide range of requirements.

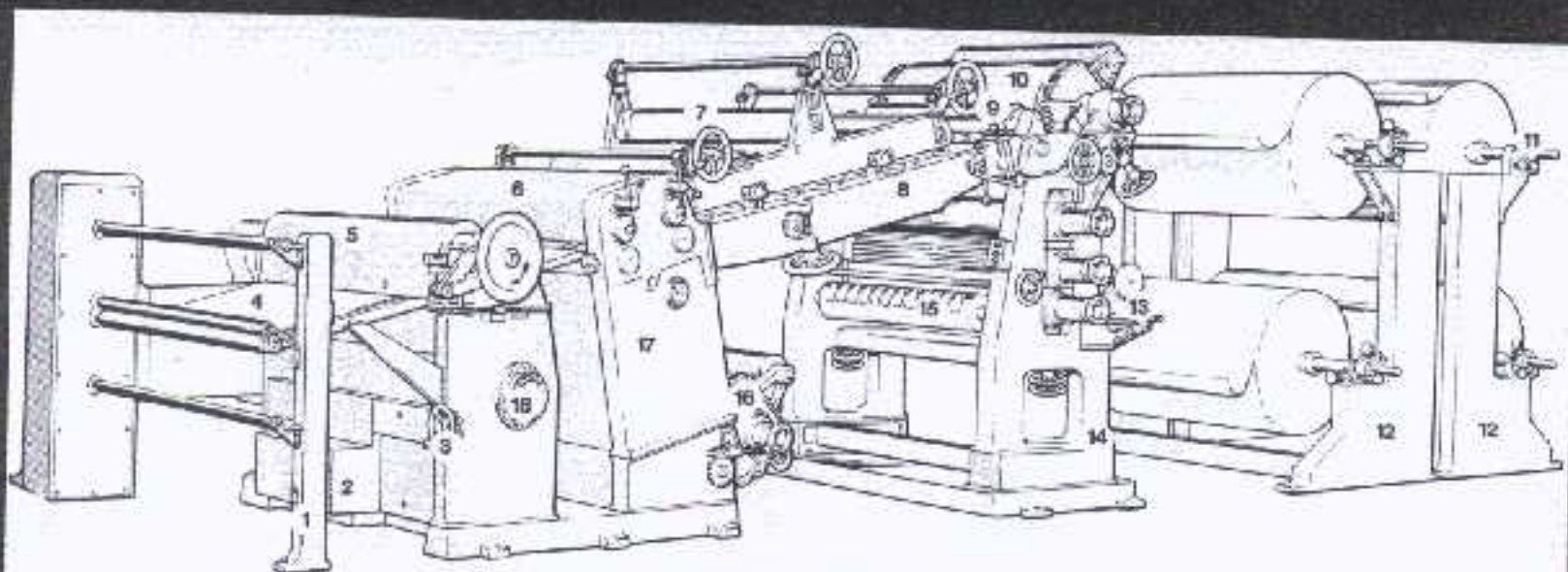
THIS MODEL.



- 1 Two or Four Spindle Rewinder
- 2 Automatic Control for Sheeting Pre-Printer Web
- 3 Hand Control
- 4 Delivery Conveyor for Sheets and Pieces
- 5 Rotary Sheeter Plain and Pre-Printed Web
- 6 Duplicate Shafts for Rotary Slitting and Creasing

- 7 Pressure Band
- 8 Heating Section
- 9 Double Backing Unit Second Adhesive Station
- 10 Liner Preheaters
- 11 Reel Positions. Provision for Tensioning, Biasing and Lateral Adjustment
- 12 Reel Stand Positions. Various alternatives

- 13 Single Facer First Adhesive Station
- 14 Single Facer Unit
- 15 Fluting Preconditioner
- 16 Liner Preheater
- 17 Rotary Creasing and Slitting Unit with Speed Indicator
- 18 Cut Length Adjusting Hand Wheel



Masson Scott Thrissell

16 and 40

Lightweight Corrugators

The Masson Scott Thrissell "16" and "40" Lightweight Corrugators are ideal machines for the production of corrugated packaging from a wide variety of lightweight materials including greaseproof, imitation parchment, kraft and foil. The "16" has a working width of 0.4 m. (16 ins.) and the "40", 1.0 m. (40 ins.).

Because of their compact overall

16
40

